

# Activity Guide & Trail Map 2025



\*This photo was taken with a zoom lens. Please stay at least 30 m from elk.  
Aussi disponible en français.

## Welcome | tawâw

Prince Albert National Park is located on Treaty 6 territory, the lands of the nîhithaw (Woodland Cree), nêhiyawak (Plains Cree), Dene, Dakota and the homeland of the Métis. These lands and waters have been cared for by Indigenous peoples for generations and continue to be used and protected today.

We recognize the shared responsibility for the stewardship of the land and waters. Do your part to protect this special place.

kistapinânîhk ihtakwan askiy kâ-kî-masinahikatik asotamâkiwinihk Treaty 6, askiy i-tipîhihtahkwâw nîhithawak, nêhiyawak, Dene, Dakota, ikwa âpîhtawikosisânak the Metis. askiy minâ nipiy kanawîhihtamwak nîhithawak minâ kayâs ôta ithiniwak kâwîkîkîk ikwa kiyâpic kwayask kanawîhihokîkîtiwa. niwâpahfinân ohcitaw poko

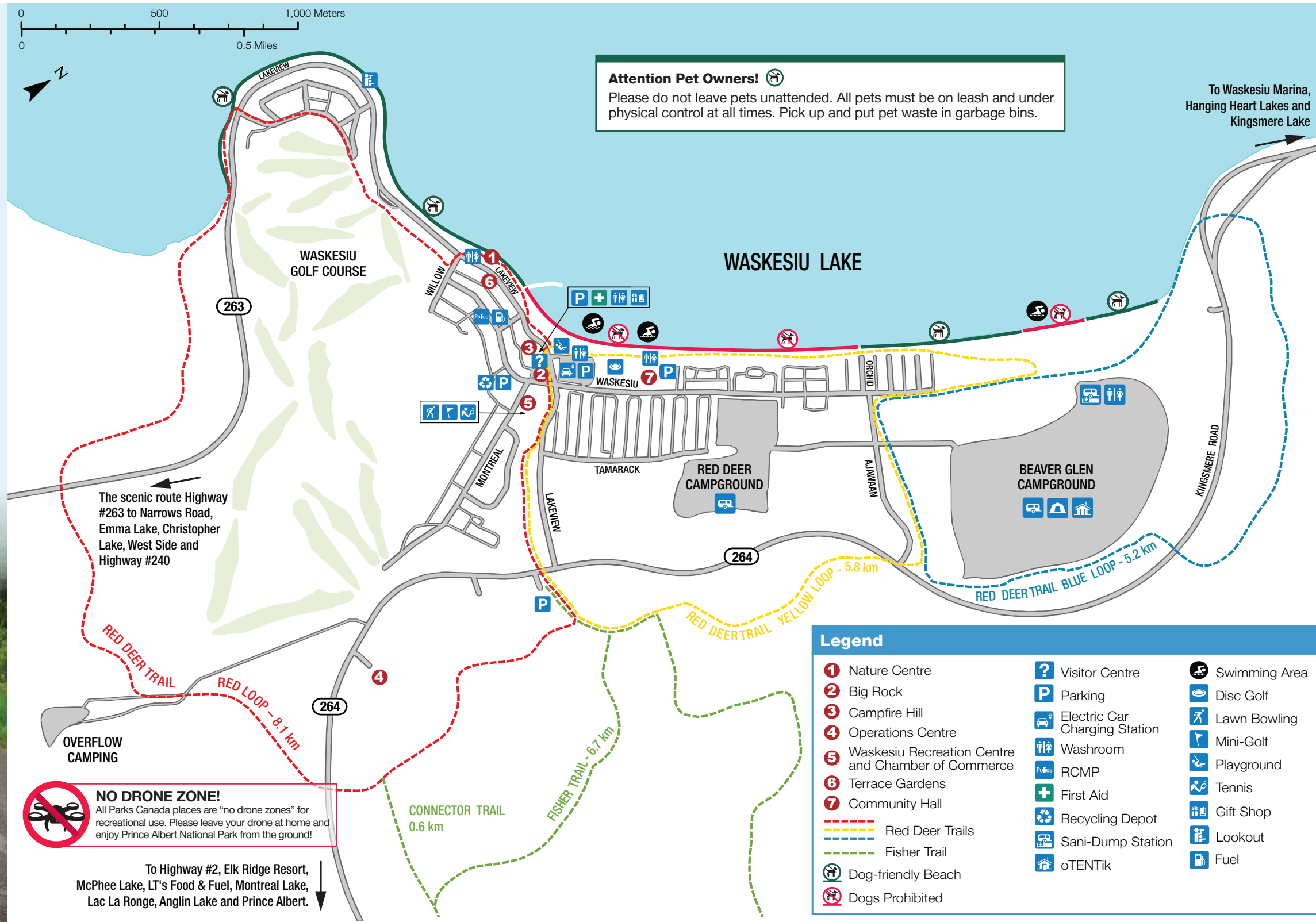
kita-mâmwî-kanawîhihtamhak askiy minâ nipiy. kîsta wîchîwî kita-kanawîhihtaman ôma askiy.

Prince Albert Tooroon not grawn piyee Li grawn bwa aykwawnima ashtay didawn Treetee Sis Li territwayr, li tayr osuchi nîhithaw (Daw li bwaw awn Cree), nêhiyawak (Li Promyee Nawsoyon), Dene, Dakota, pi la tayraen'd weekinawhk osuchi aen Michif li moond. Oohin li tayr pi diloo kee-pishkayimowawn osuchi Indigene li moond poor ashpîn kayawsh osuchi pi ahkamay awpachistawn pi kenawayshikawtayw anoush.

Ninishtowinaynawn ooma weechi- pishkayimowin poor nakatouhkawtaywin li tayr pi diloo. Weechihwiw chi-kenawayshikawtayw ooma kîschee la plaes.



## Waskesiu



## Interpretive Programs

There are free public programs daily in July and August and weekends in June and September! Get the detailed public program schedule from the Visitor Centre.

For information on paid programs for groups, contact the interpretation team at interpretationprincealbert@pc.gc.ca or 306-663-4510.



## Picnic and Beach Areas

### HEAD FOR THE BEACH!

Sandy beaches, picnic shelters and fire pits are ready for your enjoyment. Pack your picnic and swimsuits before spending the day with friends and family at:

- Waskesiu Beach
- Birch Bay
- South Bay
- Paignton Beach
- Point View
- Trippes Beach

Look for the Picnic Area and Picnic Shelter icon for more picnic areas and beaches in the park.

### Pets are welcome!

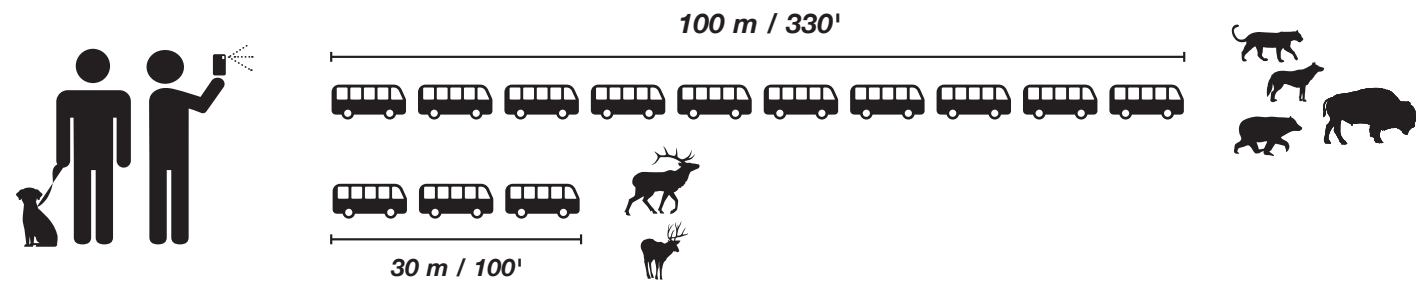
All pets must be on leash and under physical control at all times. Dogs are allowed on most beaches, except for those with buoyed swimming areas.

## Stay Safe and Protect Wildlife

- Keep a safe distance from all wildlife.** If an animal notices you and changes its behaviour by lifting its head, looking at you or listening to you, you are too close and should back away.
- Travel in groups and make noise** to let wildlife know you are nearby.
- Late summer and early fall is elk and bison mating season;** be especially aware of wildlife along trails at this time.

- If you encounter elk, moose or bison on a trail, **let them know you're there** by singing a song or whistling a tune. **Walk slowly around them at a safe distance or return the way you came.**
- Do not feed wildlife;** they have a greater rate of survival and are healthier when they eat natural food.
- Keep your pet on a leash and under physical control at all times.** Dogs can provoke defensive behaviour in bears and other wildlife.
- Know what to do when you see a bear.** Read the *Black Bear Country* brochure for more information on bears and how to prevent an encounter, available at any park facility.

### Give wildlife space



## Frontcountry Camping

### FRONTCOUNTRY CAMPGROUNDS – VEHICLE ACCESSIBLE

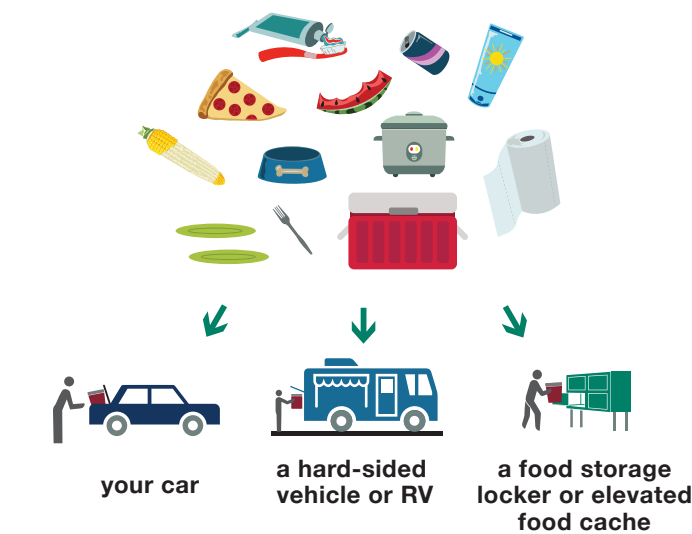
	RED DEER	BEAVER GLEN	NARROWS	NAMEKUS LAKE	SANDY LAKE
LOCATION	Waskesiu townsite	Northern edge of Waskesiu townsite	25 km NW of Waskesiu	10 km S of Waskesiu	35 km S of Waskesiu
NUMBER OF CAMPSITES	161 pull-through sites	200 electrified back-in sites, 10 oTENTikS	75 back-in, 10 pull-through	14 back-in, 6 walk-in sites	25 back-in, 6 walk-in sites
RESERVATIONS	✓	✓	Self-registration	Self-registration	Self-registration
WATER	✓	Central tap	Central tap		
POWER	✓	✓			
SEWER	✓				
SHOWER	✓	✓			
FLUSH TOILETS	✓	✓	✓		
SEWAGE DISPOSAL		✓	✓	12 km N	3 km S
FIRE PITS		✓	✓	✓	✓
PIT TOILETS		✓	✓	✓	✓
SPECIAL FEATURES	Short walk to main beach	Short walk to Beaver Glen beach	Marina close by	Non-motorized watercraft only	Boat launch and beach

There are alcohol and cannabis restrictions in effect in frontcountry campgrounds on all long weekends. Reserve your campsite today! [reservation.pc.gc.ca](mailto:reservation.pc.gc.ca) or 1-877-737-3783

Visit [waskesiu.org/accommodations](http://waskesiu.org/accommodations) for information about local commercial accommodations.

## Camping

Keep campsites clean. This means scented items or food are never left alone, even for a minute. Leaving scented items out puts visitors and wildlife at risk and can result in a fine.



### Backcountry Camping

Campgrounds are equipped with picnic tables, pit toilets, firewood, fire pits and caches for securing wildlife-attractants.

All overnight visitors, including for random backcountry camping, must register at the Visitor Centre before leaving for the backcountry. Sites are first come, first served.

**Fees:** Backcountry fees apply to all overnight backcountry stays.

### Safety:

- Check the weather, trail and fire conditions before heading into the backcountry.
- Pack appropriate equipment, extra drinking water and food in case you're out longer than anticipated.
- Before your trip, please read the *Black Bear Country* brochure.
- Take navigation tools and a first aid kit.
- REMEMBER – cell phone coverage varies throughout the park. Do not rely on it.
- Share a trip plan with trusted friends or family.
- For additional resources: [AdventureSmart.ca](http://AdventureSmart.ca)

## Contact Information

### Visitor Centre - Open Daily

1-306-663-4522  
princealbertinfo@pc.gc.ca  
[parks.canada.ca/princealbert](http://parks.canada.ca/princealbert)

**Toll-free National General Information Line:**  
1-888-773-8888

### Reserve your campsite:

1-877-737-3783  
[reservation.pc.gc.ca](http://reservation.pc.gc.ca)

**Stay safe and be AdventureSmart on the trails or water:**  
Visit [adventuresmart.ca](http://adventuresmart.ca) for tips to stay safe on your trip.

### Connect with us!

@ParksCanada\_SK  
[facebook.com/PrinceAlbertNationalPark](https://www.facebook.com/PrinceAlbertNationalPark)

Stay informed about upcoming events, important park updates or conservation work at Prince Albert National Park. Get the latest news straight to your inbox with the click of a button. Subscribe to our newsletter today!

### Emergency

Dial 9-1-1 RCMP, Fire, and Ambulance  
1-877-852-3100 For all other emergencies (Parks Canada Dispatch)



### MAKE MEMORIES HERE THIS WINTER!

Prince Albert National Park is open for winter adventures. Explore the beauty of snow-covered forests and frozen lakes on skis or snowshoes. Park entry fees apply year-round. Contact the Visitor Centre to plan your visit today!

## Help Protect Park Waters

### Mandatory Aquatic Invasive Species (AIS) Watercraft Certification Permit

All watercraft must have a *mandatory AIS watercraft certification permit* before entering Prince Albert National Park waters to help stop the spread of AIS.

This includes motorboats, canoes, kayaks, stand-up paddleboards, wind surfing boards and rowboats.

Pick up your free AIS watercraft certification permit at an entry gate, the visitor centre, marina or a self-certification station at a boat launch or day-use area.

Watercraft used outside of Saskatchewan in the past 45 days must undergo inspection and/or decontamination to meet permit conditions.



[parks.canada.ca/princealbert-aquatic](http://parks.canada.ca/princealbert-aquatic)

Make clean, drain, dry a habit everywhere you go! Clean, drain and dry all watercraft and water-related gear, including trailers, fishing gear, personal flotation devices, wetsuits, paddles and beach toys.





