



Spring Newsletter

President’s and Chairperson’s Report

Kurt Wintermute, WSRA President, and Jennifer Wood, WSRA Chair

Welcome to another fabulous season at Waskesiu! Spring brings a sense of renewal – longer, sunnier days, warmer nights, and the forest floor coming back to life. It’s the season that invites us outdoors, whether it’s feeling the sand between our toes or taking a peaceful walk along the water’s edge.

For seasonal residents, spring also marks the return to lake life and all the tasks that come with it – clearing soggy leaves, turning on those hard-to-reach water connections, restocking supplies for visiting family and friends, prepping the boat for its first outing, and opening cabins and cottages for the months ahead.

In this newsletter, you’ll find helpful tips and updates to get you started, including spring leaves collection, waste management, tree removal, Aquatic Invasive Species prevention, watercraft certification permits, wildfire risk reduction and FireSmart initiatives, pet policies, firewood, conservation news, and more. Be sure to check out the latest updates from community organizations and Parks Canada as well.

We remain committed to focusing on what matters most to seasonal residents like you. We’re excited to be nearing the final stages of updated cottage development guidelines and, alongside our community partners, will soon shift our attention to cabin development guidelines.

As the season begins, we can already imagine it all – the sizzle of the grill, the gentle rhythm of waves along the shore, the glow of a vibrant sunset, the taste of fresh-baked cinnamon buns, and the sound of laughter echoing through the air. It’s the warmth of a neighbour’s welcome and the soulful call of the loon that reminds us we’re back where we belong.

Welcome home to Waskesiu.

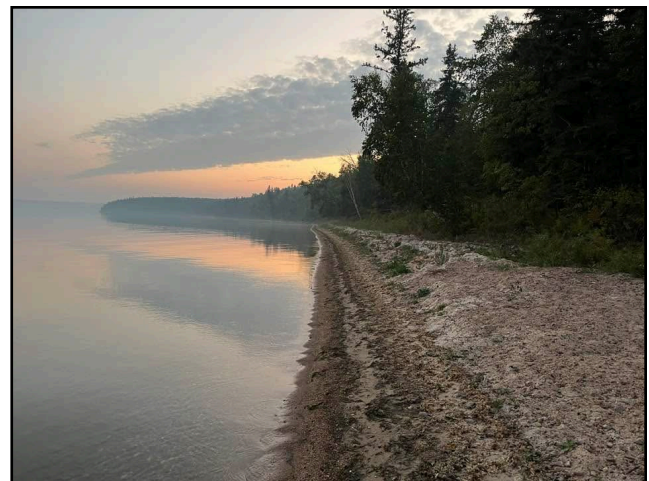


Photo Patti Koivisto

Save the date: WCC and WSRA Joint AGM

Mark your calendars for the following which takes place Sunday, August 2 at Terrace Gardens.

- 8:00 am: Registration, coffee & refreshments
- 8:30 am: Waskesiu Community Council AGM
- 9:35 am: Parks Canada annual update to the community and Q & A
- 10:45 am: Waskesiu Seasonal Residents Association AGM
- 12:00 pm: Adjournment

Contents

Parks Canada	p.2	Reel Rave.....	p.16
Community Council...	p.11	Music Festival.....	p. 16
Foundation.....	p.12	Friends of the Park...	p. 17
WRA.....	p.13	Last word WSRA.....	p. 17
Chamber	p.14	Calendar of Events...	p.18
Museum	p.14		
Lobstick Golf.....	p.15		

Parks Canada

A Word from the Park Superintendent

Jennifer Duquette, Superintendent, Northern Prairies Field Unit

Welcome back to Prince Albert National Park for 2026. We want to begin by respectfully acknowledging that the lands and waters within Prince Albert National Park are Treaty 6 territory, and that all people here are beneficiaries of this treaty. These territories encompass the lands of the nîhithaw (Woodland Cree), nêhiyawak (Plains Cree), Dene, Dakota and the homeland of the Métis. We remain deeply grateful for their past, present, and future stewardship, and we are committed to strengthening the relationships that guide our shared path forward.

As you return for the 2026 season, we want to extend a heartfelt welcome to our seasonal residents. There is a unique magic to this time of year as the park transitions, and we look forward to seeing our community reconnect in the places we all cherish.

Reflecting on a Season of Resilience

Last year brought significant challenges, specifically the wildfire threats that impacted our region. It was an exceptional year and may have been challenging for many individuals and business owners. We want to share a sincere thank you for your incredible support and cooperation during that time. Your patience and adherence to safety protocols were vital as our teams worked to protect the integrity of the park and the safety of the townsite. It is a testament to the strength of this community that we can move into a new season with such a strong foundation of mutual care.

Parks Canada Priorities

Prince Albert National Park remains committed to strengthening our relationships with Indigenous Peoples and investing in critical infrastructure. We continue to support tourism in Waskesiu, highlighted by the \$2.4M project to upgrade electrical systems at the Red Deer Campground. While reservations for the peak season have been delayed, access for residents will be opening soon. For further updates, please visit our website or stop by the visitor centre.

Protecting Our Waters

Conservation remains a top priority, particularly as we work to safeguard our "intricate web of



biodiversity." Please be advised that the 2025 Aquatic Invasive Species (AIS) protocols remain in effect for 2026 with additional measures, including a visible sticker on all watercraft. We are continuing our rigorous prevention

and permitting programs to keep invasive mussels out of our pristine waters. Your diligence in the "Clean, Drain, Dry" initiative is a major step towards the preservation of these ecosystems for future generations.

Stay Connected

This newsletter contains essential reminders regarding townsite protocols and tips for living safely alongside the park's majestic wildlife. For the latest updates:

- Follow us: Facebook or X @PrinceAlbertNP
- Visit us online: parks.canada.ca/princealbert
- In Person: The Townsite Office and Visitor Centre staff are ready to assist you with any questions.

Management and Community Planning – Have your say!

Both the Prince Albert National Park 2017 management plan and Waskesiu community plan require renewal. You will have the opportunity to share your views and have input into the future of the park and community. Stay tuned for updates.

Thank you for your continued dedication to the health and vibrancy of this beautiful park. Wishing you all a safe, restful, and truly enjoyable summer!

Do Your Part to Keep Aquatic Invasive Species Out of the Park

Thank you to all residents and visitors for your commitment to protecting Prince Albert National Park lakes and rivers last year. In 2025, the aquatic invasive species prevention program achieved a 91% compliance rate. Keep it up!

What's new in 2026

This year, Parks Canada is enhancing aquatic invasive species prevention measures to further reduce risk, which include:

- Mandatory visual compliance sticker for all permitted watercraft to improve visibility and support enforcement.
- Drain plugs must be removed during over-land travel, consistent with Saskatchewan legislation.
- Expanded random inspections of all types of watercraft.
- Increased staff presence at key locations throughout the park.

Looking ahead: Anticipate changes for 2027

Parks Canada continues to develop a longterm AIS prevention plan with input from Indigenous partners and rights holders, local community groups and regional stakeholders. The plan will take an evidence-based and adaptive approach that protects aquatic ecosystems while supporting positive visitor experiences. The program is evolving. More information will be shared as the plan is finalized.

Implementation of strategies identified in the longterm prevention plan is expected to begin in 2027. These changes will be phased in over several years to ensure they are coordinated, effective and sustainable.

The Prince Albert National Park aquatic invasive species prevention program is a second line of defence, supporting the Province of Saskatchewan’s mandatory roadside inspection program.

Pick up your 2026 permit early!

All [watercraft](#) must have an aquatic invasive species [watercraft certification permit](#) before entering any Prince Albert National Park waters. This includes motorboats, canoes, kayaks, stand-up paddleboards, wind surfing boards, inflatable boats, rafts and rowboats. Water-related gear, such as inflatable beach toys, do not require a watercraft certification permit.

Parks Canada encourages seasonal residents to pick up permit(s) before May long weekend. Starting April 15, you can [pick up your free permit](#) at the park entry gates or the visitor centre.

*Watercraft operators must carry a copy of their permit at all times. An image of the permit saved on a mobile device is acceptable.

Watercraft used outside of Saskatchewan in the past 45 days must undergo inspection and/or decontamination to meet permit conditions. [Decontamination stations are available from May 11 to September 1, 2026.](#) Visitors travelling with watercraft from out of province can call 306-479-0007 to book their watercraft inspection and decontamination.

Why prevention matters

[Aquatic invasive species](#), such as zebra mussels, threaten freshwater ecosystems, harm fish populations, damage infrastructure and reduce aquatic recreational opportunities. Once established, aquatic invasive species may never go away. Prevention remains the best defence.

Parks Canada takes its mandate to protect ecological integrity seriously. To prevent the spread of aquatic invasive species, Parks Canada implemented the aquatic invasive species prevention program which includes seasonal aquatic monitoring, permitting and inspections, education and regulations.



	<p>CLEAN Inspect and clean all mud, sand, plant and animal materials from your watercraft, trailer and water-related gear. This includes boats, paddleboards, fishing gear, etc. Rinse, scrub or wash your boat and gear.</p>
	<p>DRAIN Drain all water from your watercraft and water-related gear. This includes bilges, livewells, buckets and other items or compartments that may hold water. <i>Pull the plug</i> on your boat every time your watercraft moves between waterbodies.</p>
	<p>DRY Dry all parts of your watercraft, trailer and water-related gear between trips to Prince Albert National Park. Leave compartments open and gear in the sun until dry. Use paper towel, rags or soft cloth to speed up the process.</p>

Stay Emergency Ready: Plan Ahead

Emergencies can happen anytime. Being prepared will help you stay calm and act quickly:

1. **Know the risks** – [Knowing and understanding hazards](#) will help you better prepare and plan for emergencies.
2. **Make your emergency plan** – [Create an emergency plan for you and your household or business.](#)
3. **Get an emergency kit** – [Pack an emergency kit](#) that includes at least 3 days of essentials, such as water, food, important documents, medications, and [supplies for pets.](#)

Call 911 for police, structural or vehicle fires, or ambulance service. For other concerns, call Parks Canada Dispatch at 877-852-3100. Response times may vary, and help may not be immediately available. In an emergency, stay informed with official sources, including SaskAlert and Prince Albert National Park website and social media. For more information, visit the park's [emergency preparedness web page.](#)

Volunteer with Prince Albert National Park

Become a habitat hero and help protect the park from invasive plants (weeds)! Prince Albert National Park is looking for volunteers who are willing to Adopt-a-Patch and visit several times throughout the summer. Parks Canada specialists will work with you to provide training so that you are confident while volunteering. Once trained, you will volunteer independently at your adopted patch in the Waskesiu townsite throughout the summer as your time permits.



For more information and to register, contact: pnpa-conservation-panp@pc.gc.ca or 306 663 4522.

What's in the Water? Stay Safe by Knowing the Risk



Photo Patti Koivisto

The lakes and rivers in Prince Albert National Park are not treated and can have bacteria, viruses, parasites or other organisms that are harmful to human and animal health, including but not limited to swimmer's itch, E.coli and blue-green algae. Harmful organisms in untreated water are visible and invisible, and their concentration can change quickly depending on the season and weather conditions. Use caution and common sense when assessing new or unknown situations in the park. Drinking untreated water can cause serious illness and death. Seek out additional information when needed and **recognize safety risks:**

- **Swimmer's itch:** Occurs periodically. Caused by parasites and appears as a skin rash or welts. To prevent it, rinse thoroughly with fresh water and dry off with a towel.
- **E.coli:** Is a bacteria that can indicate an increased concentration of pathogens that can cause serious illness. Introduced into lakes and waters by the animals we share the park with. Levels of E.coli often change quickly with moving water.
- **Blue-green algae:** Naturally occurring organisms commonly found in lakes throughout Saskatchewan. Most common during periods of calm, warm weather in the areas of lakes with shallow, slow-moving water. Some forms can be toxic if ingested.

If you observe or become aware of potential safety risks such as potential blue-green algae blooms, please report it to the Visitor Centre in person or at 306-663-4522. Watch for important bulletins and signs posted in day use areas that will alert you to the

possible presence of high concentrations of harmful organisms in the water.

Updates for 2026

- The Canada Strong Pass is back for summer 2026! The Government of Canada is offering free admission and a 25% discount on fees for camping and overnight stays from **June 19 to September 7, 2026**. The Canada Strong initiative is designed to reduce financial barriers and encourage Canadians to explore natural and cultural heritage places.
- Visitor Centre summer hours begin May 10. Open daily 7 am to 8 pm.
- Entry gates open for the season on May 10. Hours will vary.
- Expect engaging interpretive programming throughout the summer. More information to come!
- Fishing season opens Saturday May 17th. Fishing permits are available at the Visitor Centre, campground kiosks and entry gates, as well as third party vendors: The Waskesiu Adventure Centre (Marinas) (to be confirmed); LT’s Food and Fuel; Fern’s Grocery Emma Lake; Tourism Prince Albert
- Long weekends are the busiest times of the year in Prince Albert National Park, so lineups are expected in the afternoon and early evening. Use your insider knowledge: plan to arrive earlier or later to avoid the rush.
 - Prince Albert National Park does not operate a dedicated pass holder lane during busy periods. When things are quiet, staff may wave pass holders through without stopping. On long weekends, both lanes are needed to process the high number of non-permit holders entering the park.
 - For seasoned regulars who know the ins and outs of the park, timing is everything. Plan it right, and you’ll be on your way while the rush is just getting started.

Put Waste in the Right Place



Waste collection services and facilities help keep Waskesiu clean and free of wildlife attractants. Thank you for your diligence in properly disposing of waste. Knowing where to sort waste is a step towards greener living!

- Recycling – at the recycling depot off Montreal Drive
- Compost – at the recycling depot off Montreal Drive
- Garbage – in the brown bins located around the townsite
- Roll-Off Bin (for small project construction waste including windows and frames, deck boards, scrap wood, dry wall, and carpet) See below for more information.

Please remember that disposing of construction waste in the waste bins in the residential area can damage equipment. The cost of fixing equipment is charged to residents.

Roll-Off Bin for Small Construction Waste

Roll-Off Bin Hours of Operation

- Daily 8:00 am to 3:00 pm from **May long weekend to September long weekend**.
- Weekdays 8:00 am to 3:00 pm after **September long weekend until Thanksgiving**. Please email panpassets@pc.gc.ca for more information or to book an appointment for weekend drop off in the fall.

The “Roll off bin” is a seasonal receptacle for residential construction waste located at the Operations Centre. All material must be put **in** the bin, do not leave materials on the ground. This bin is not intended for the disposal of construction waste from commercial properties or contracted work done

on cabins. Contractors are expected to dispose of their own waste when working on cabins. Commercial operators are required to remove their construction waste from the park and dispose of it.

The area is monitored by video camera.

Don't Miss Yard Pick Up Day

Residents are asked to bag their yard waste in compostable paper bags designed for yard waste and leave it at the edge of their yard for pickup on scheduled pickup days.

The *2026 Yard Waste Directive – Waskesiu Townsite* and the yard waste pickup calendar are available online at waskesiu.org.

Yard Waste Pick-up Dates
• June 17th
• July 8th, 22nd
• August 5th, 19th
• Sept 2nd, 16th

Compost: Reduce your cost of waste management and help the environment

Composting in Waskesiu is easy and dramatically decreases the amount of waste going to the landfill. Deposit compostable material – **in a compostable bag** – in the red bin located at the recycle area on Montreal Drive. *Did you know?* The compost service is operated by a private contractor.

Household Compost Only

Acceptable Items	Non- Acceptable Items
<ul style="list-style-type: none"> Fruit and Veggie scraps Egg Shells Nuts and Seeds Cardboard and Paper Food Soiled Cardboard packaging (Pizza Boxes) Coffee Grounds 100% natural fabric like cotton or wool Hair and Fur 	<ul style="list-style-type: none"> Glass of any kind Plastic (Including degradable or biodegradable) Metals of any kind Heavily coated paper like magazines Metallic Wrapping paper or glitter Plastic Lined Cartons Fleece or any other non-natural Fabric Sticker 

[Subscribe to the Prince Albert National Park/Parks Canada email newsletter](#) to stay informed about upcoming events, important park updates or conservation work, delivered right to your inbox! Select the Parks Canada topics you are interested in receiving email updates for, including:

- General Information
- Waskesiu Updates
- Fire Information
- Science and Conservation

Everyone Pays for Improper Waste Disposal

Improperly disposed waste costs the leaseholders in Waskesiu. Abandoned waste incurs additional costs because it takes additional staff time to dispose it properly and damages park equipment. These additional costs are passed on to all leaseholders through their annual garbage bill.

Remember - deliberately abandoned waste and/or improper use of disposal facilities is a violation of the National Parks of Canada Garbage Regulations under the Canada National Parks Act. Violators can be charged and face court appearances and fines.

You can help keep neighbourhoods clean and safe by properly disposing of waste and reporting abandoned garbage or illegal dumping to the Townsite Office at waskesiuadmin@pc.gc.ca.

Keeping the Community Safe through Wildfire Risk Reduction Efforts

Parks Canada takes wildfire seriously. The Waskesiu Community Fuel Break and other risk reduction efforts help reduce wildfire risk. Forest thinning improves fire suppression efforts by reducing the fuels wildfires thrive on.

The community fuel break requires year-round maintenance to remain effective. In winter, some coniferous trees and underbrush are removed from select areas in the townsite. Residents may notice significant thinning of trees and underbrush in the areas along Bluebird Street and Tamarack Street, in the area between Rose Street and Orchid Street, around the water tower and along Montreal Drive near the fire hall, as well as an area near the Beaver Glen Campground entrance. While the changes may alter a familiar landscape, it is a crucial step towards protecting Waskesiu against wildfire threats.

Prince Albert National Park is updating the (2027-2032) wildfire risk reduction plans over the coming year.

Buhl Fire Summary

The Buhl Fire was detected on June 29, 2025 north of Prince Albert National Park, and on July 12 spread into the north and northeastern areas of the park. It burned approximately 96,991 hectares in total, including more than 13,000 hectares within Prince Albert National Park. It was managed first internally by Parks Canada, then under unified command with the Saskatchewan Public Safety Agency, and then as part of the Weyakwin Complex (including the Ditch02 and Hawk Fires). The Buhl Fire management was an excellent example of inter-jurisdictional partnership in responding to wildfire in Saskatchewan this season of which we can all be proud.

Help Protect Waskesiu from Wildfire - Be FireSmart

FireSmart is a community protection program. It focuses on how individuals and communities can work together to reduce the risk of loss from wildfires in communities across Canada.

Here are some simple ways to FireSmart your property this summer:

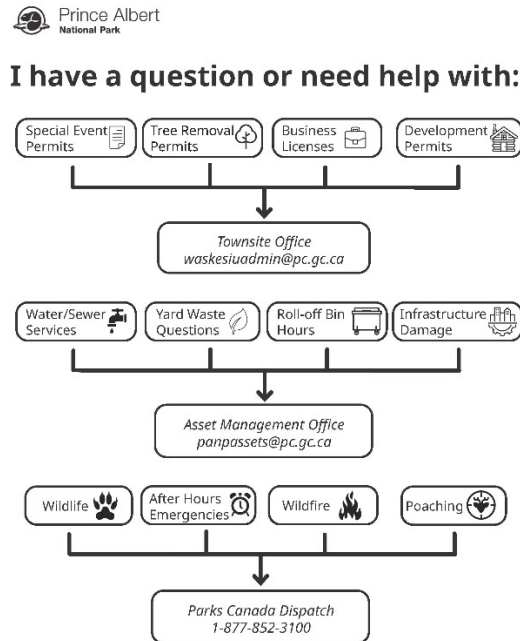
- Remove sticks, dry leaves and fallen trees around your home
- Clear gutters, eaves and vents
- Keep windows clear
- Keep porch and decks clear or screened
- Screen or seal all soffits
- Mow or “weed whip” and rake all grass on your lot
- Move all firewood and combustible items a minimum of 10 metres away from your house

You may install structural protection sprinklers on your property but do not turn them on. In a wildfire emergency, follow all direction from emergency response personnel. They will turn on sprinklers if and when needed. Contact the townsite office for a sprinkler poster so that personnel know you have a system installed.

Please visit firesmartcanada.ca for more information about the FireSmart disciplines. Remember that removing or trimming trees is prohibited in Prince Albert National Park without proper permits. For inquiries about trees on your property, or if you are

interested in making your property FireSmart this summer, contact the Townsite office at waskesiuadmin@pc.gc.ca.

More News You Can Use from PANP



Waskesiu Townsite Administration Team
WaskesiuAdmin@pc.gc.ca

The Waskesiu Townsite Administration team welcomes our Seasonal Residents back to Waskesiu for another amazing season in beautiful Prince Albert National Park. Do you have need to contact the townsite team but you’re not sure who you should contact, not to worry. Please send your questions and requests to waskesiuadmin@pc.gc.ca. This generic email is monitored by all members of the townsite team.

Scott Nesbitt, A/Townsite & Realty Manager

The townsite manager supports a small team of Parks Canada staff who focus on real property and land use within Waskesiu and Parks Canada’s Northern Prairies Field Unit.

Paulette Hodgson, Retired

After serving the Waskesiu Community as the Townsite Clerk for over a decade, Paulette Hodgson retired from Parks Canada at the end of the 2025 season. Paulette provided a significant and valuable contribution to the townsite team, and we will miss

her presence in the office. We wish Paulette and her husband Herb all the best as they embark on their new journey of retirement!

Coralee Foster, Realty & Compliance Advisor

The Realty and Compliance advisor provides advice and administers the Parks Canada land use agreements (leases and licences) with the cottage, cabin and business owners in the park.

Sheldon Salzl, Townsite Administrative Services Officer

Prince Albert National Park welcomes Sheldon Salzl, the newest member of the townsite team! As the Administrative Services Officer, Sheldon will support the realty and development team, as well as administer business licences and special event permits within Prince Albert National Park.

Michael Obe, Realty and Development Officer

Michael's role includes the administration of both residential and commercial property development and building permits as well as tree removal permits.

Development and Building Permits

The *National Parks of Canada Land Use Planning Regulations* apply to all land use and development related projects conducted by tenants (e.g. lessees and licensees) in Prince Albert National Park. This includes projects such as but not limited to: replacing a cabin, renovating a cottage, restoring commercial accommodations, installing a septic system, building a deck or fence, landscaping and improving existing infrastructure.

National Parks of Canada Land Use Planning Regulations "Structure", means any temporary or permanent physical work, such as any building, facility, fence or sign.

Prohibitions

Works, activities and land uses

3(1) It is prohibited to do any of the following, other than in accordance with an authorization or permit issued by the superintendent:

- a) change the use of any land or structure, including by changing the intensity of that use;
- b) construct, install, alter, move, remove or demolish a structure;
- c) excavate the ground or dump fill;
- d) materially alter the grade of the land or surface drainage patterns;

- e) landscape an area with non-living materials such as paving stones or make alterations to such landscaping;
- f) plant a non-native or fruit-bearing plant species;
- g) fell, move or damage a tree
- h) install exterior lights, other than temporarily for the purpose of a seasonal event.

For information about the Land Use Planning Regulations and associated fees, visit the [Land use planning and permitting in national parks and national park reserves webpage](#), or contact waskesiuadmin@pc.gc.ca.

Parks Canada is committed to ensuring that the fees charged are affordable and represent good value. Revenues from fees are reinvested into operations and directly support the enjoyment and conservation of Parks Canada administered places.

Tree Removal from your Leasehold

Thinking about removing a tree because it may present a hazard or for development purposes?

Natural resources such as trees in national parks are protected under the Canada National Parks Act. Trees may need to be removed if they become a danger risk to people and property or for other purposes such as development, maintenance and FireSmart® activities. A permit authorized by the superintendent is required for the removal of any trees within the park.

Obtain a *Tree Removal Application and Permit Application* from the Townsite Office at waskesiuadmin@pc.gc.ca.

You need to know:

Contact the Townsite Office at

waskesiuadmin@pc.gc.ca if you have questions pertaining to tree removal or the process.

- A **dangerous tree** (live or dead, regardless of size) that could cause personal injury and/or property damage if a failure occurs. A **hazardous tree** is any tree that is not deemed dangerous but is anticipated to become dangerous because of declining tree health and subsequent decay.
- A **development tree** is a tree in which removal is sought for development purposes. Removal of this type of tree has different

timelines and criteria before it can be removed. If you are considering tree removal for development purposes, please plan ahead.

- The **migratory bird nesting period** in Prince Albert National Park is from April 15 through to August 31. During this time, only dangerous trees will be approved for removal. Tree removal for development purposes will only be approved for removal outside of the nesting period (September 1st to April 14th).
- Assessing applications for tree removal and issuing permits takes time. Planning ahead is important. Please let us know if you have any questions.

Thank you for Keeping the Rubber OFF the Road

Keeping the streets clear ensures that emergency vehicles can access the area as needed. Parks Canada, the Waskesiu Seasonal Residents Association, and the Waskesiu Community Council appreciate the continued diligence of residents in making residential streets safer by keeping the rubber off the roads.

Cottage and cabin owners and guests must park vehicles and/or boats so that the tires are not on the asphalt. This means vehicles and boats must be parked on the leasehold property or other designated parking areas.

Vehicles and/or boats that are improperly parked may be towed and owners charged under the National Park Regulation.

Keep Pets on a Leash

No matter what activities you and your pet are planning, remember that pets must always be on their leash in Prince Albert National Park. This protects your pet, wildlife and other visitors. Wildlife may see your pet as a threat, competition or prey. If wildlife feel threatened, they may attack or follow your pet back to you.

When visiting with your furry companion, remember these tips to ensure a safe and enjoyable trip to the park:

- Keep pets on a leash of **3 meters or less**, or in a suitable container or enclosure **at all times**.
- **Never leave your pet unattended** anywhere in the park.
- **Choose activities and terrain** suitable for you and your pet's abilities.
- **Check for pet restricted areas, including buoyed swimming areas and some beaches.**
- **Consider leaving your pets at home** when travelling in the backcountry.
- **Wait for the invitation** from others before approaching with your pet.

Water Quality Update

Parks Canada routinely monitors drinking water quality to make sure it meets Health Canada guidelines. Chlorine is used to treat drinking water and is an effective disinfectant. However, it can react with natural organic matter (NOM), like leaves or vegetation, to produce a by-product called trihalomethanes

(THMs). Prince Albert National Park is making every effort to maintain the lowest reasonable levels of chlorine to treat the water and reduce THM formation, so that visitors, staff and residents can drink it with confidence. The benefits of disinfecting water with chlorine are much greater than the potential health risks of being exposed to higher levels of THMs.

Residents and visitors to Waskesiu can reduce their exposure to THMs in drinking water by:

- Using a pour-through water pitcher filter
- Installing a filter on your faucet or under your sink that is labelled with a certification mark stating that it is certified to remove THMs
- Using water from other sources for drinking water. Do not drink untreated water from lakes or streams.

Save Time and Pay Online

Pay for your utilities (water/sewer, garbage), land rent, and commercial leases with a credit card online. Visit parks.canada.ca/payment and follow the instructions to pay bills quickly and easily! The webpage is available to all clients with a customer account and/or invoice number. To find your customer number, contact npfu-finance-finances-ugpn@pc.gc.ca

Parks Canada is investing in maintaining and upgrading the water treatment plant in Waskesiu to reduce reliance on chlorine to treat drinking water.

Reminder: Water and Sewer Procedures

Cabin owners and commercial operators are responsible for disconnecting their property from the main water system according to the *Fall Water Service Shut Down Directive*. Make this a part of your end-of-season routine. See [this link](#) for a handy disconnection instructional video for residents in the cabin area with water boxes!

Cold weather can damage the seasonal water system if water is not properly disconnected at the end of the summer. Parks Canada may shut down water services to areas of Waskesiu that are at risk because of cold weather. When possible, there will be advance notification provided.

For water/sewer related matters, please contact panpassets@pc.gc.ca

Firewood Information for Residents

To reduce the risk of unwanted pests seasonal residents may bring firewood into the park or have it delivered in bulk for personal consumption providing it meets necessary criteria.

Firewood obtained for use in the park must meet the following criteria:

1. **Locally Harvested:** Firewood must be harvested and processed in Saskatchewan to reduce risk of invasive pests.
2. **Condition:** Firewood must be dry, seasoned for at least a year, and free of sawdust, woodchips, and any foreign material, including invasive insects and pathogens.
3. **Preferred Species:** Jackpine is preferred and other species such as birch are accepted if they meet the criteria.
4. **Packaging:** All packaging material related to firewood bundles should be reusable, returnable, or recyclable.
5. **Prohibited Firewood:**
 - o Elm firewood: Importation, transportation, storage, and use are prohibited under the Dutch Elm Disease Regulations in Saskatchewan.
 - o Firewood sourced from the Cypress Hills area: Importation, transportation, storage, and use are prohibited due to

the risk of spreading the mountain pine beetle.

Residents can use their own firewood at day use areas providing it adheres to the park's 2025 Firewood Regulation and Standards.

If residents are using a firewood supplier and having wood delivered, the supplier must meet the park's Firewood Rules and Standards, be approved to bring firewood into the park, and complete an attestation form declaring their product meets the outlined criteria. A **list of approved suppliers** and an **attestation form** is available from the Townsite Office. Suppliers delivering firewood direct to consumers must have a Prince Albert National Park business license. For information, contact the Townsite Office at waskesiuadmin@pc.gc.ca.

Increasing Safety and Securing Wildlife Attractants

Parks Canada works to ensure that wildlife and people can safely share this special place. **Follow these simple steps to keep bears out of your neighborhood and help ensure safety for people and all wildlife.**

1. Place all garbage and recycling into appropriate *bear-proof* containers. These are the large metal receptacles around the townsite and campgrounds with a locking lid that prevent bears from getting inside.
2. Clean your BBQs as soon as they are cool and remove and clean out the grease trap/pan. Put the used grease and residue in the garbage receptacles as described above.
3. Keep all items with a scent in your residence, vehicle or safely stowed when not in use. Tents, dog food, even foam boat seats all have a scent.
4. Do not feed birds, squirrels, or other wildlife. Food for small animals is also food for large ones.
5. Do not put bird feeders at your residence.

Please remember that human food and other attractants kill wildlife. It is illegal to feed, entice or disturb any wildlife. Violators may be charged under the Canada National Parks Act and could pay fines up to \$25,000.

With your help we can keep bears wild and improve the survivability of bears who were habituated in the past.

Important Notice - Staying Safe in Bear Country

New bear awareness signage has been installed at the Kingsmere trailhead. Please take a moment to review the information before departing in this backcountry wilderness area.

Remember to:

- Secure all food and scented products in sealed container and store it in the tree caches if camping.
- Consider leaving your pet at home for the safety of yourself, your pet, and wildlife.
- If desired, carry bear spray and know how to use it. Bear spray is effective when used properly. Keep it accessible and learn how to use it in advance of your trip.
- Please report concerning wildlife interactions to Parks Canada.

Help Prevent the Spread of Wildlife Disease in the Park

Everyone can help keep wildlife safe by not spreading sickness and disease amongst wildlife. To stop the spread of potential disease to or from the park:

- Do not approach or handle wildlife, including sick, injured, or dead birds and animals.
- Call Parks Canada Dispatch at 1-877-852-3100 if you spot sick, injured or dead wildlife in Prince Albert National Park, or tell a staff member.
- Never feed wild birds from your hand or try to lure birds with food or seeds. This includes birdfeeders.

Kingsmere Lake Trout - Remember to Turn in your Endorsements and Tags

Everyone fishing for lake trout in Prince Albert National Park must have a Lake Trout endorsement card, numbered tag, and a national park fishing licence. The endorsement card and tags provide the park with valuable data about the estimated number of lake trout caught that summer so we can ensure the population is sustainably managed. If you are fishing for lake trout, you must return lake trout endorsement cards – whether you caught lake trout or not – to the Visitor Centre or collection boxes at any fish shack. Do your part to help conserve lake trout!

Waskesiu Community Council

Jim Kerby, Council Chair

The Waskesiu Community Council (“Council”) welcomes everyone back to beautiful Waskesiu – our favourite place on earth!

WSRA & Council – Continuing to Work In Partnership

Special thanks to the WSRA for the excellent work you do on behalf of Waskesiu’s cottage and cabin



owners, and for our community as a whole. Council greatly appreciates the WSRA’s ongoing partnership with us on many fronts. Significant progress has been made during the last year on several joint files including aquatic invasive species (“AIS”),
new cottage

development guidelines, townsite waste management, emergency communications & response protocols, and structural fire and wildfire protection plans for Waskesiu. All of these important topics will be discussed at the 2026 annual general meeting on August 2nd at Terrace Gardens.

While many topics (including those listed above) are of significant interest, reiterating the critical importance of preventing the spread of AIS into the waterbodies of Prince Albert National Park warrants repeating.

Preventing “AIS” together

As mentioned last year, it is critically important that everyone learns about preventing the spread of “AIS” – the acronym for “Aquatic Invasive Species” – by working together to protect Park waterbodies.

AIS (which includes zebra and quagga mussels and their microscopic larvae) are spread to new waterbodies by attaching to watercraft, trailers, and other equipment used in an infected waterbody - then transported and used in a new waterbody without the watercraft or equipment being decontaminated or properly cleaned, drained and dried.

Why does AIS matter?

The devastating (and irreversible) impact of AIS on waterbodies has frightening implications for the Park, including beach closures, watercraft bans, dying birds, fish and other wildlife, clogged water supply & treatment systems, suffering local businesses, and a significant decrease in cabin & cottage values. Hopefully, some (or all) of those negative impacts matter to you and your family.

Mandatory AIS Watercraft Certification Permit & Sticker

All “watercraft” must have an Aquatic Invasive Species watercraft certification permit (and, new this year, must display an AIS prevention program sticker on their watercraft) before entering any Prince Albert National Park waters. The term “watercraft” includes motorboats, canoes, kayaks, stand-up paddleboards, wind surfing boards, inflatable boats, rafts, and rowboats. Water-related gear such as inflatable beach toys do not require a watercraft certification permit. The permit certifies that you have not used your watercraft outside of Saskatchewan in the past 45 days. The permit and sticker are free and will continue to be valid for the entire 2026 boating season if your watercraft does not leave Saskatchewan. Watercraft operators must carry a copy of their permit at all times. An image of the permit saved on a mobile device is acceptable.

Watercraft used outside of Saskatchewan in the past 45 days must undergo inspection and/or decontamination, by trained Parks Canada staff, to meet permit conditions. Decontamination stations will be available from May 11 to September 1, 2026. Visitors travelling with watercraft from out of province can call 306-479-0007 to book their watercraft inspection and decontamination.

Please pick up your permit(s) and sticker(s) as soon as possible at an entry gate, at the visitor centre, or at a self-certification station located at a boat launch or day-use area. Permits will also be available at the three marinas when open water season begins.

Be aware - failure to have your AIS permit and sticker can result in fines of up to \$25,000.

Waskesiu.org

To learn about what’s happening in Waskesiu, please visit Waskesiu.org regularly. As Council’s community website, it is updated frequently and packed with information about “what’s new in Waskesiu”. It’s also mobile friendly, making it easy for you to stay connected with Waskesiu wherever you go.

On behalf of the Waskesiu Community Council we wish you, and your family, a wonderful, happy, and safe summer filled with the joys of nature!



Photo Patti Koivisto

Waskesiu Foundation

Welcome to another exciting season! While our work continues year-round, it’s always energizing to be back in the heart of it all. Waskesiu comes alive in spring with the sights and sounds of seasonal residents returning, local businesses reopening, and visitors stopping by for their first trip of the season.



Waskesiu
Foundation

As always, we’re incredibly grateful for the support of our community partners, sponsors and donors. Thanks to you, more than \$5 million has been raised and reinvested into recreational, social, cultural and environmental activities that enhance the Waskesiu experience.

People are truly at the heart of our community. We extend our sincere thanks to Greg Thorimbert, a dedicated volunteer of the Waskesiu Foundation, who recently retired from the Board after more than 15 years of service. As treasurer, Greg managed our finances with care and precision – preparing financial statements, tracking project expenditures, and balancing the budget – all while maintaining a

full-time career and supporting other local causes. We're deeply appreciative of his commitment and wish him all the best.

We're also pleased to welcome Bobbie Kelly as our newest volunteer director. Since joining the Board on March 1, she has taken on the role of treasurer. Bobbie brings over 30 years of experience in a variety of oil and gas accounting positions. Her connection to Waskesiu runs deep and dates back to the early 1950's when her father first owned a shack tent. As a child, she held several summer jobs in Waskesiu, including delivering the Star Phoenix at just 10 years old. Now based in Calgary, Bobbie and her brother continue that connection as cabin owners in the community. We're excited to have her on board.

On the project front, we're thrilled to be on the home stretch of Phase 3 of the Waskesiu Recreation Area Renewal project, which includes two new dedicated pickleball courts and a newly replaced recreation office building. Final touches at the Waskesiu Rec Centre will be completed soon, including interior cabinet work and a second coat of exterior stain. In partnership with the Waskesiu Recreation Association, we'll also be implementing the landscaping plan for the Rec Centre by the end of June, featuring paving stones, native shrubs, and trees. Be sure to watch for a new windscreen on the pickleball courts, showcasing colourful graphics by Brandy Smart.



We're also in the planning stages with the Lobstick Golf Club on two projects to improve the Waskesiu golf course – more details to come soon.

Finally, we invite you to save the date for our annual gathering. The Happy Hour Bingo Bash takes place on Saturday, July 11 at the Waskesiu Community Hall, with cocktails at 6:00 pm, dinner at 7:00 pm and wildly engaging music bingo at 8:00 pm. It promises to be fun-filled evening of great food, drinks, prizes, and entertainment. Visit waskesiufoundation.ca for full details and ticket information. We hope to see you there!

Waskesiu Recreation Association

Heidi Kerby, WRA Manager



The Waskesiu Recreation Association (WRA) would like to take this opportunity to welcome all Waskesiu seasonal residents back to the most beautiful place on earth! For those of you new to the WRA, we are a community focused non-profit organization. Our mission is to provide outstanding recreational facilities, recreational activities, and quality events for Waskesiu's residents and visitors.

The Waskesiu Recreation Centre is a modern sports facility located in the heart of Waskesiu, and is home to Little Al's Mini Golf, Saskatchewan's best mini golf experience. The Rec Centre is open every day from the May long weekend to the September long weekend, weather permitting. Patronage of WRA facilities and events, and volunteer participation are greatly appreciated. They are also a vital way to ensure that the WRA is successful in its mission and commitment to reinvesting in Saskatchewan's favourite playground!

The WRA offers season, monthly and weekly passes for families and individuals. Our Early Bird Family Pass is the best value in Waskesiu! Enjoy more than \$50 in savings when purchased before June 30th. Pass holders, along with daily fee paying visitors, can enjoy first class tennis, pickleball, basketball, floor hockey, beach volleyball, and lawn bowling facilities. Other popular activities include an adult fitness park, youth ninja park, ping pong, foosball, giant chess/checkers, and shuffleboard.

Sport Lessons, Drop-In Pickleball: Drop by the Rec Centre to sign up for kids lessons (ages 5-12) in tennis, pickleball, basketball or soccer (10 - Noon Monday through Thursday) - OR - take some time for yourself and join our Drop-In Pickleball (9 -11 am Monday through Thursday). We also offer

introductory lessons for adults in both pickleball and tennis (private and/or small group sessions).

NEW Youth Programs! Running Club and Arts & Crafts Club: Join us on Saturday mornings, 9 to 10 am to “run for fun” with our youth Running Club, and/or Sign up for our HeArts & Crafts Club from 10-11 am. Family members are welcome and encouraged to join their kids/grandkids in both programs.

Check out our website and sign up for notifications at: waskesiurecreation.ca

Call the Rec Centre: (306) 663-0601 or Email: WRAManager21@gmail.com

Visit us! 1500 Montreal Drive, Waskesiu Lake

2026 WRA Calendar of Events	
May 15	Little Al's Mini Golf & Rec Centre Opens
June 12-14	Tennis Saskatchewan Open Event
July 1	Canada Day
July 25	Children's Festival
August 2	Grey Owl Howl Family Dance
August 28 - 30	Waskesiu Lakeside Music Festival
September 26	Outter Limits Fun Run

Waskesiu Chamber of Commerce



As we welcome the 2026 season, the Waskesiu Chamber of Commerce is excited to greet both returning visitors and new faces to our beautiful community. For 67 years, the Chamber has proudly advocated for local businesses, while

fostering the engagement, promotion, and collaboration that help strengthen Waskesiu and the surrounding region.

Our membership reaches beyond Waskesiu into the broader Lakeland area and Prince Albert, bringing together family-owned businesses, corporate enterprises and a diverse range of non-profit organizations across many sectors. We remain committed to supporting the businesses and organizations that make this region vibrant, welcoming, and truly one of a kind. Visit our website to learn more waskesiuchamberofcommerce.ca

In today’s ever-changing economic landscape, it has never been more important to support local businesses and choose Canadian products whenever possible. By investing in local entrepreneurs, artisans, and service providers, we help strengthen our economy and ensure that Waskesiu and the surrounding communities remain resilient, thriving, and full of opportunity.

This season, we encourage both residents and visitors to shop local, dine local, and support the businesses that shape the identity and future of our community. Every purchase made close to home makes a meaningful difference.

As we look ahead to another exciting season, let’s continue working together to celebrate and support the businesses that make Waskesiu so special. Your commitment to supporting local and choosing Canadian products leaves a lasting impact, and we look forward to seeing you in Waskesiu this season.

Waskesiu Heritage Museum

Betty Falk, President

Like you, we are ready to “spring” into summer. It’s time to finally put away our parkas and snow boots, shake the dust off our sunglasses and sandals, and get back to peaceful mornings, sunny afternoons, and beautiful sunsets on Waskesiu Lake. With the hustle and bustle of everyday life, it’s time to unplug and reconnect with friends, family, and ourselves - time to reset with laughter, fun, and life at the lake. And what better way, than to stop by the Waskesiu Heritage Museum.

Grab a coffee or an ice-cold drink, find a spot in our camp kitchen, and watch the world go by.

Or pop into the Shack Tent, say hello to one of our friendly guides, try your hand at the old washing machine and purchase a raffle ticket on a fully accessorized folding Biktrix E-bike. Tickets are \$5.00 each and the draw will be held on August 31st.

Wander our grounds and see the rail cart, fire cupola, and portable cabin or just gaze at the butterflies as they dance in our wildflower garden.

Come into the Museum building and see our exhibits such as the Twin Pine Cinema projector, Margaret’s memories and souvenirs from days gone by.

Strolling around town? Scan the QR code on the award-winning Heritage Moments signs that can be found on various buildings to learn more about the history of Waskesiu.



Plans are already underway for our annual special events. Mark your calendars!

The season kicks off with our entry into the annual Canada Day parade. Grab your lawn chair, find a spot along the parade route, and give us a wave and a cheer as we pass by.

Looking for an evening of family fun? The first bingo of the year kicks off on Thursday, July 2. After that, Bingo will be on Wednesdays, July 8, 15, 22, 29. Bingos in August will be Friday, August 7, and Wednesdays August 12, 19. Try our ice-cold drinks and tasty treats from the concession.

Our highly anticipated Yard Sale will be held this year on Saturday, July 4 from 9 am to 2 pm. This event is always a lot of fun and many a great bargain can be found. Contact our Yard Sale Coordinator, Jillian Manchester, at jillflk@yahoo.com for more information. Dates and times for donations of sale items to be announced at a later date, so please check our socials and website for updates.

If you have some free time, we always welcome volunteers! Volunteers are needed for bingo (callers, runners, concession workers), the Yard Sale (setting up and taking down, floaters), to help with activities at special events like the Children’s Festival, Heritage Day and the Lakeside Music Festival, or assist in the shack tent for a few hours. Email us at info@waskesiuheritagemuseum.org.



Thank you for the all the ways you continue to support the Museum: volunteering, bringing visitors, supporting our fundraisers, making

donations and following us online. We really appreciate your involvement.

Waskesiu Lobstick Golf Club

Tyler Baker, General Manager

Our classic Stanley Thompson designed course is cut through the majestic spruce forests of PANP. Enjoy beautiful course conditions and sighting the elk and other animals for which we are famous. Tee time



bookings are on generous 10 minute intervals to ensure our patrons a nice pace of play. Rental power carts, pull carts and clubs are available as well as a 15 bay driving range and putting green.

Blaine Fagnou will be returning for his second season at the course. Blaine did some tremendous work on the golf course last year, not only helping with wildfire/reforestation, but also creating the best possible playing conditions for all levels of golfers to enjoy.

In 2024 the golf course was rated 47th in the Top 100 in Canada, and in 2025 we were rated as the 15th best public course in Canada. This is something we are very proud of and shows off the hard work our staff puts into the course.

In 2026, we are excited to introduce Amy Hadley as our new Food & Beverage Manager. Many will remember Amy from her thirty plus years owning and operating *Amy’s on Second* in Prince Albert. Amy is also bringing along and new Head Chef, Jenni Lessard. Jenni previously had her own restaurant in Birch Hills and currently operates *Inspired by Nature Culinary Consulting*. Be sure to visit the historic

Stanley's Clubhouse and enjoy one of the many fabulous dishes we will be offering this year. Also, check out our Tenth Hole, the halfway food shack at the end of Montreal Drive, to grab a snack, or one of our famous Kaiser sandwiches, and watch some golf.

Our Pro-shop offers a full selection of men's and women's golf attire, equipment and rentals. Lobstick logoed wear is extremely popular with golfers and non-golfers alike. Paul Schatz returns as our CPGA golf pro and offers lessons to everyone from beginners to skilled players.

The famous Lobstick Golf Tournaments return once again this season. Men's and Seniors Lobstick Tournaments will be held in June. Ladies, Junior Women's and Junior Men's Lobstick Tournaments are in August.

We hope to see you out at the course this season. I encourage you to drop by for a look or a visit with myself, Paul or Amy.

Reel Rave Film Festival

Mark Your Calendars! The 2026 Reel Rave Film Festival will be held Sept 11-13th. Want to be a *Friend of the Fest*? Details coming soon about volunteer opportunities and rewards; information will be posted to our website - reelravefilmfest.ca - by May 1st. We hope you can make it!



Waskesiu Lakeside Music Festival

Mark your calendar! Be sure to save the last weekend of August (August 28 to 30th) and make your plans to enjoy three days of wonderful free musical performances at the 2026 Waskesiu Lakeside Music Festival (the "Lakeside Festival") presented by Phantom Light Distillery. It's Waskesiu's biggest event of the year!

The Lakeside Festival weekend is jam-packed with a variety of free family activities, including live musical entertainment on Friday evening, all day Saturday, and on Sunday afternoon. Saturday also features a children's play area (including free bouncy castles & face painting), a variety of great food vendors and the Lakeside Festival Original 16 Beer Gardens. Join us on Sunday for a great car show, the Lakeview Drive street fair and our really popular Indigenous talent showcase.

The Lakeside Festival is proudly hosted by the Waskesiu Recreation Association. This year's festival features more than 20 hours of musical performances from over 15 groups covering multiple genres. Join over 6000 music fans for a unique (and free to attend) outdoor experience that could only happen in beautiful Waskesiu!

And remember, if you love the Lakeside Festival as much as we do, there are lots of ways to help support it. They include buying Lakeside Festival merchandise, 50/50 tickets, and volunteering your time. New this year, consider joining our "Festival Fams" VIP group - a great way to show your support and keep this tremendous festival in Waskesiu. Sponsorship opportunities are still available, and donations (eligible for a charitable tax receipt) are always welcomed via the Waskesiu Foundation (waskesiufoundation.ca) - just use the drop-down menu to choose "Lakeside Music Festival".

So save the date and invite your family and friends to join you! The Lakeside Festival is definitely "the place to be" from August 28 to 30. For more information on everything, please visit lakesidefestival.ca.

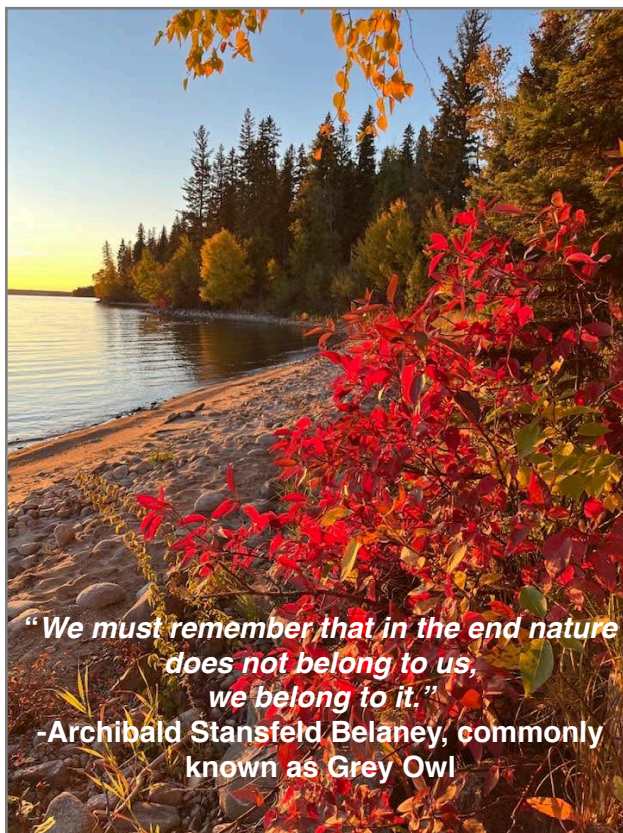


Friends of the Park

Welcome back to Prince Albert National Park friends and travellers. Another year is coming up and more exciting adventures with it. Every year brings a new adventure and Friends of the Park is looking forward to these adventures once again and meeting new faces.

We will be opening our bookstore the 3rd week of June 2026. We appreciate Peter from *Turning the Tide* bookstore in Saskatoon for curating our books, as well as supplying them for us.

We will continue our crowd favourites throughout the summer, with the Lego castle on Saturdays and at special events, such as the Children's' Festival and the Lakeside Music Festival. We will also be including Saturday morning Puppet shows with our VP, Carol and her Friends. Following the puppet shows, just after the lunch hour, we will host our "Music in the Siu" series, where we bring in different artists to sing and entertain the crowds.

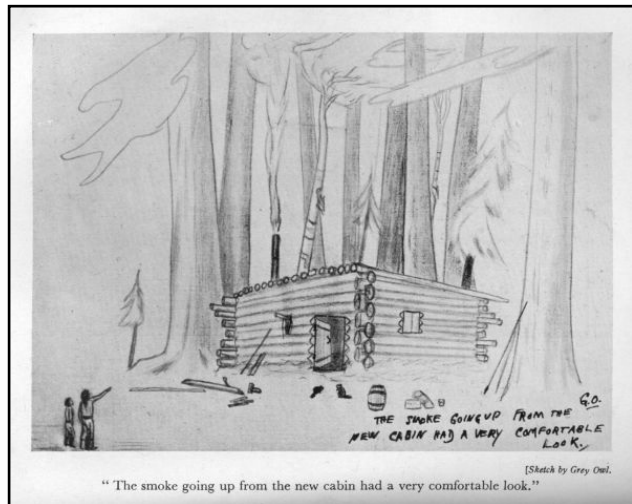


"We must remember that in the end nature does not belong to us, we belong to it."
-Archibald Stansfield Belaney, commonly known as Grey Owl

Photo Patti Koivisto

Canada day is a big day in the Park and we start the weekend with prayers from our Elder. Everyone is welcome to this special morning event, which begins at approximately 9:30 am. Tea and bannock will be served after the prayers.

We hope to see you out there and am looking forward to meeting and talking with you.



A Last Word from WSRA

Waskesiu Seasonal Residents Association (WSRA) is a not for profit association. We work with Parks Canada, the Waskesiu Community Council and other organizations and officials within Prince Albert National Park (PANP) on matters that concern the cabin and cottage owners who are seasonal residents in the Waskesiu townsite.

Those matters include *the occupancy, use, maintenance, leasing and improvement of cottages and cabins, and the areas in which they are located.*

We also:

- ✓ Promote understanding and co-operation between leaseholders and others using PANP.
- ✓ Work to protect and enhance the environment, infrastructure, and recreational and cultural facilities within the Waskesiu townsite.
- ✓ Provide a forum to discuss and share information on matters of concern to leaseholders.

The elected WSRA Board of Directors is made up of members from diverse backgrounds who represent the cabin and cottage area as equally as possible.

2025 - 2026 Board of Directors

Jennifer Wood, Chair
 Kurt Wintermute, President
 Terry Baerg, Secretary/Treasurer
 Robert Hawkins Rob Oswald
 Paul Pinder Ron Jones
 Josh Opheim Tom Holfeld

If you are interested in serving the community through the WSRA, please contact any member of the Board of Directors, or email us to learn more about opportunities.

Stay in touch through our page at wakesiu.org (“our community” tab), or email us at wakesiusra@gmail.com

Add your voice . . .

The membership fee structure is set up so that you save money and add convenience by renewing your membership for 5 years - \$35 annually or \$125 for five years. When your membership expires, we will contact you about membership renewal.

There are **3 ways to renew your membership.**

1. Email your information along with an e-transfer to wakesiusra@gmail.com.
2. Mail a cheque along with your information to our treasurer, Terry Baerg: PO Box 36, Wakesiu, Sk S0J 2Y0
3. Sign up and pay your dues at our annual meeting

Please include your name, lake address and email address.

Calendar of Events

June 12-14 Tennis Saskatchewan Open
 June 17 Yard Waste Pick-up
 July 1 Canada Day Celebrations
 July 4 Heritage Museum Yard Sale
 July 8 Yard Waste Pick-up
 July 11 Wakesiu Foundation’s “Happy Hour Bingo Bash”
 July 22 Yard Waste Pick-up
 July 25 Wakesiu Children’s Festival
 Aug 2 WSRA/WCC Joint AGM 8 am Terrace Gardens
 August 2 Grey Owl Howl Family Dance
 August 5 Yard Waste Pick-up
 August 19 Yard Waste Pick-up
 August 28-30 Wakesiu Lakeside Music Festival
 Sept 11-13 Reel Rave Film Festival
 Sept 26 Outter Limits Fun Run/Walk

Heritage Museum Bingos: July 2, 8,15, 22, 29 and August 7, 12, 19

* See more details for these events in the articles by the sponsoring organizations in this newsletter. Go to wakesiu.org for news and updates on activities and events.



We acknowledge that Wakesiu is on the traditional lands of the Cree Peoples, signatories to Treaty 6, and the Homeland of the Métis. We pay our respect to the First Nations and Métis ancestors of this very special place and reaffirm our relationship with one another.