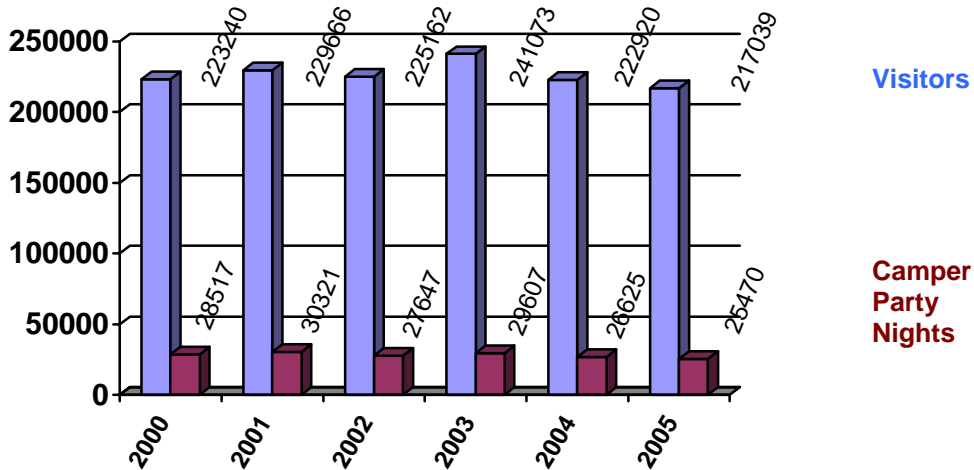




Fast Facts and Figures ~Updated November 1, 2006

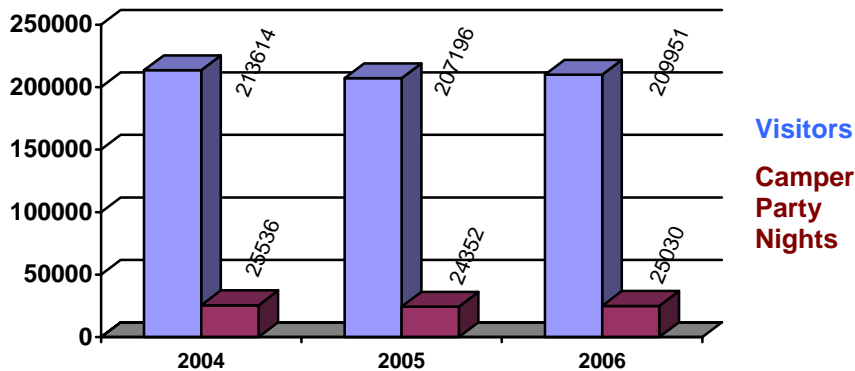
Visitation, Camping & Reinvestment Statistics

1. Annual Visitation and Camping Statistics by Year

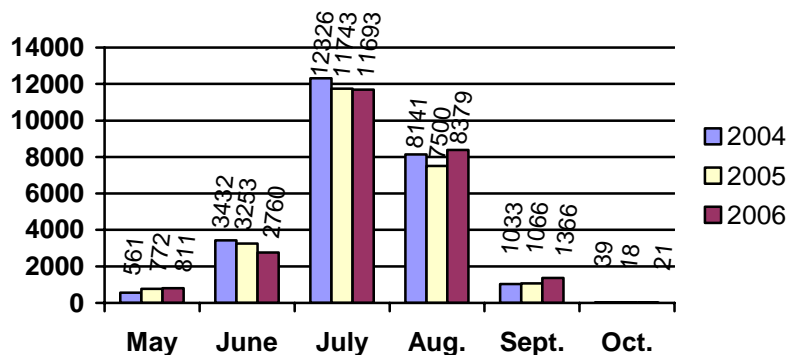


2. Annual Visitation and Front-country Camping Statistics 2004 – 2006

Visitation: January to end October; Camping May to end October

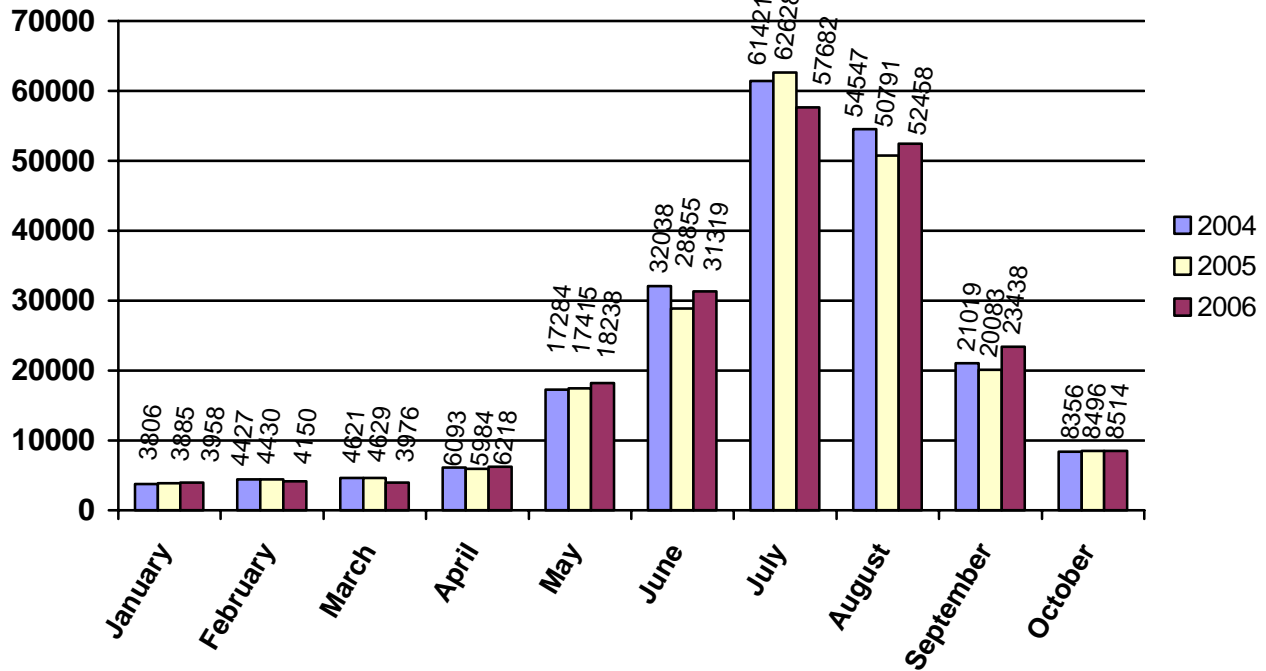


3. Camping Statistics by Month 2004 – 2006

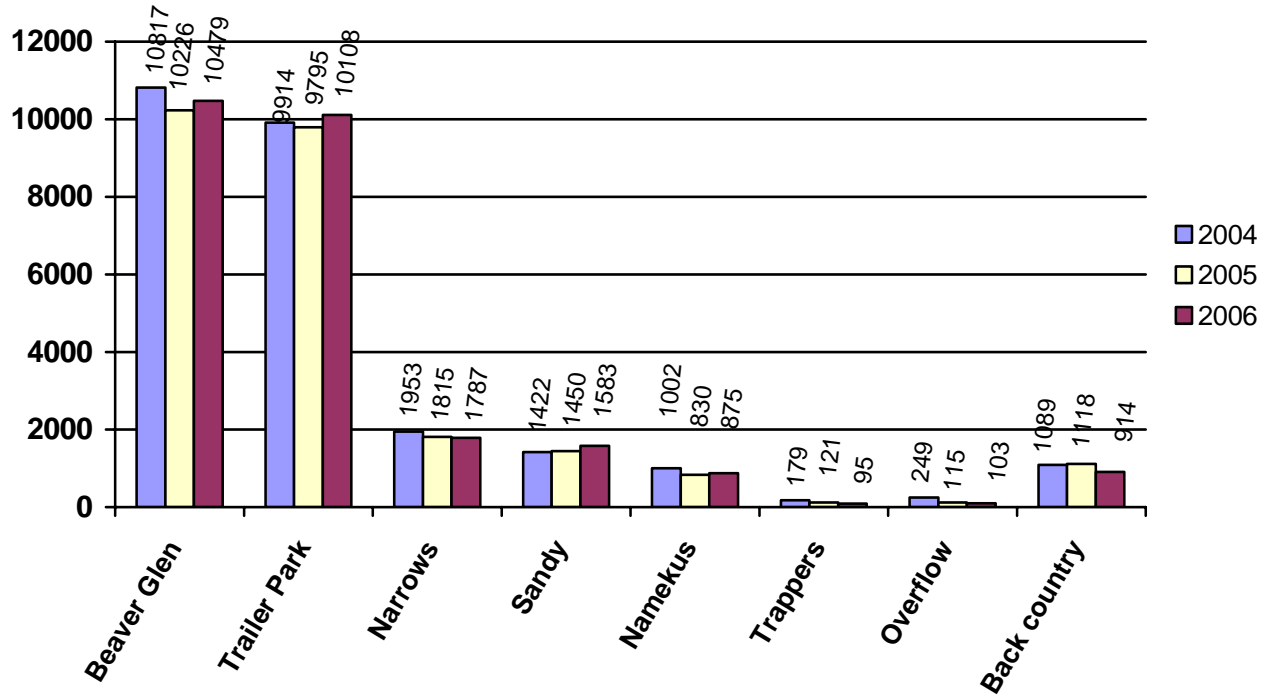




4. Visitation Statistics by Month ~ 2004-2006



5. Camping Statistics ~ January-October ~ 2004-2006



Note: 2006 backcountry to October only. 2004 and 2005 are figures for the full year.
November 1, 2006